

RiversEdge Phase 3 CRA/CDD Project

Contract No.: 70423-23

Client: City of Jacksonville

County: Duval

Construction Cost: \$40M

Reference: Jonathan Page, P.E.

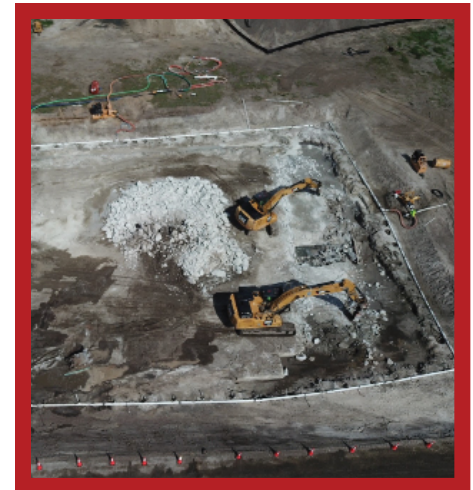
Project Manager

(904) 255-8931

jpage@coj.net

Project Description

This \$40M public/private partnership project between the Downtown Investment Authority, the City, and the Developer for the redevelopment of this 32 Acre Brownsfield Development site. The project consists of new roadways, water, and sewer utility systems including a new lift station, underground electrical and communication infrastructure, storm drainage system, lighting, and signage. The project also includes the development of 4 new public parks including a new riverwalk, marshfront park as well as 1255 LF of nature boardwalk and 1650 LF of new overland trails.



- VIA CONSULTING SERVICES, INC. -

Construction Engineering and Inspection Services

10250 Normandy Blvd., Suite 304

Jacksonville, FL 32221

(904) 783-9842